

## Check out the latest news from Kulshan Services!

*We create lasting solutions for our client's community and environmental challenges.*



**Our work is fascinating and fulfilling because of you!**

***We LOVE what we do, and we ENJOY working with our clients.***

We have staff on board with multiple skill sets.

**Nate** is ready to provide GIS, climate action planning, wildlife studies, and community outreach work.

**Reid** has an extensive background in fish biology and has become our number two man on stormwater.

**David** is running group processes on a wide range of issues.

**Terry** is expanding his work to all forms of land use regulatory processes.

**Todd** loves to research, explore archives, and find meaningful information that will enhance any project.

**Allison** is providing outreach and public engagement for several entities. She also produces our newsletter, edits our reports, updates our website and can do this for you too!

**Sarah**, our office manager, also has a degree in Environmental Education, field experience with fish, and a background in salmon restoration.

We collaborate with other professionals when we need a multi-disciplinary team.

### **Celebrating Five Years in Business! Thank you to our clients and business supporters!**

In March, we celebrated our fifth year in business! Over those five years, our work has been diverse, but often, there's a common theme - helping people plan and communicate effectively about science, the environment, policy and regulatory conditions, permitting, and their strategic objectives.

**Here's business by the numbers for the past 5 years.**

- Serviced contracts with **50** different clients
- Inspected **dozens** of stormwater systems in **2** counties
- Completed municipal stormwater projects with **5** municipalities and **1** statewide organization
- Facilitated large group processes for **8** separate entities from short-term to multi-year time frames
- Provided mitigation planning, environmental assessment, permit or lease support for **20+** projects
- Provided community engagement process leadership in **several** Pacific Northwest communities.



## New Business



### **Mine Reclamation Project in Whatcom County**

Kulshan Services is managing a multi-agency, multi-jurisdictional effort to develop a new reclamation plan and obtain a revised operating permit for the Swen Larsen Olivine Mine in Whatcom County. This process includes local, state and federal agency coordination, an integrated NEPA/SEPA approach, environmental review and document preparation, and sub-contractor management. Our experience and attention to details in these complex processes allow our clients to focus on business operations while looking to the future.



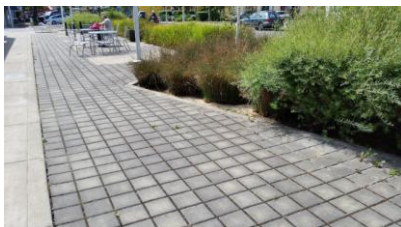
### **Source Control Monitoring in Lynden**

Kulshan Services is providing source control monitoring for the City of Lynden on Fishtrap Creek under contract with Welch Ecological Services. Monitoring is being conducted as part of the City's NPDES Phase II permit requirements. The City's monitoring efforts are conducted in collaboration with Whatcom County and the Whatcom Conservation District. The project involves identifying sources of fecal coliform bacteria and ammonia contamination in stormwater from sources throughout the Fishtrap Creek drainage within the city limits. The study also addresses DNA testing.



### **Whatcom County Trail Plan Alternatives Analysis**

Our team recently completed an Environmental Analysis for the Lake Whatcom Park/Lookout Mountain Park Trail Plan (Plan). The EA supports the SEPA review process for the Plan. The EA provides an alternatives analysis for development of the preferred trail system design and other options that were considered. This effort also identified avoidance, minimization and mitigation strategies for potential impacts from the Plan.



### **Updating Low-Impact Development (LID) Codes for Anacortes**

The City of Anacortes (along with other cities working to meet this requirement) is in the process of updating their municipal codes and engineering standards to incorporate new provisions for low impact development (LID). These changes are driven by the State of Washington and requirements in the City's stormwater permit.

Additionally, the City plans to restructure several titles related to land use in the code. This effort is designed to remove outdated and duplicated requirements and to organize the code so that it represents municipal review and decision making. Kulshan is working with Welch Ecological on this project.



### **What's Up on the South Fork of the Nooksack?**

Kulshan Services will be facilitating a watershed planning process that will protect and enhance ecosystems and community uses on the South Fork of the Nooksack River. The project initially came together to address concerns for the future of endangered Chinook salmon in the South Fork watershed. Our work group is examining opportunities to protect and restore functions in the watershed to improve water quality and quantity as well as to reduce the likely changes associated with climate change trends. Kulshan will explore opportunities to work with landowners in the South Fork watershed and ultimately, our goal is to develop a watershed plan that addresses the multitude of interests and uses in the watershed. This plan would address both environmental and community needs and consider approaches to addressing the climate trends predicted for the watershed.



### **Community Engagement in the Skagit Watershed**

The Skagit Watershed Council has hired Kulshan to step up their Community Engagement process. We will be developing tools, activities, and key messages with their new Community Engagement Committee about saving salmon and watershed health that will reach a diverse population, assist member organizations with a unified message, and prompt young people, the general public, and landowners to take action on behalf of the watershed.

## **Continuing Business**

### **State Policy Analysis and Technical Support**

Terry continues to advise the Northwest Marine Trade Association (NMTA) and its members on state policies that affect their organization and its membership. Recently, the Washington Department of Natural Resources (DNR) decided to abandon the development of a Habitat Conservation Plan (HCP) for state-owned aquatic lands. Additional stakeholder engagement identified significant confusion and concern on the development and potential implementation of the HCP conditions.



### **The Right Strategies for Levees on the Nooksack River**

For over two and a half years, Kulshan has been providing strategic and logistical support on the development of the SWIF plan for the lower Nooksack River. During that time our staff has facilitated 25 meetings with eight teams, engaging over 80 people representing agriculture, tribes, diking districts, and agencies. Key outcomes have been a vegetation plan and a streamlined permitting process for routine maintenance. The SWIF Plan addressing maintenance deficiencies and habitat improvement opportunities will be completed in June. Lessons learned from this pilot project will be applicable to all river systems in the state included in the Federal PL87-99 Program.



### Multiple-Benefit Outcomes in the Skagit Valley

The Farm, Fish and Flood Initiative (3FI) team is making good progress on their Hydrodynamic Modeling (SHDM) effort for the lower part of Skagit River. Modeling results combined with other site data will be used to identify potential project alternatives that could achieve a multiple-benefit outcome of recovering salmon, reducing flood risk, and protecting farmland. In a parallel effort, the team is evaluating a number of ideas to enhance Skagit County's protection of farmlands. David keeps the group stays on track.



### Who to call for Marine-Related Regulatory, Permitting, and Leasing Issues?

Terry is working with several marina owners across the state to assist with their land use planning processes. Current projects include: a lease amendment negotiation for a marina facility in Port Orchard; a lease reauthorization negotiation for a Columbia River yacht club; continuing lease negotiations for the use of state-owned aquatic lands in Chelan County; a lease reauthorization for a marina on Bainbridge Island; and a project defining management authority for waterway uses in Lake Union.



### Stormwater Stewardship in Whatcom County

Kulshan Services continues to assist Whatcom County Public Works with its stormwater compliance program. Our team presented educational workshops for stormwater system owners a evaluations of their stormwater systems for interested participants. Each evaluation includes a maintenance plan, an educational walk through of their system , and information to inform and guide them in the maintenance of their stormwater system.



## Expansion of Services

### We Do Fisheries Assessments

Did you know Kulshan Services has experience conducting fisheries assessments? Our Fisheries and Aquatic Biologist, Reid Armstrong, has years of experience conducting fish passage evaluations, fish salvage and exclusion, fish population assessments , and stream habitat assessments in streams throughout the western United States. Reid has a large skill set of sample methodology, data analysis options, and strong technical writing skills.

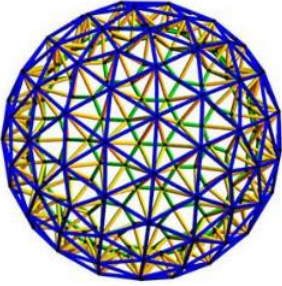


### Wildlife, Climate Action Planning, and GIS Services

Nate continues to provide GIS analysis and cartography support on a number of our projects. He is currently finishing his Masters in Environmental Science thesis on North Cascades elk population. Nate has restoration planning experience and field experience including fish, amphibian, and habitat surveys; trapping, tagging and tracking small mammals. Nate is currently working part time for the City of Bellingham on their climate action plan.



## News from the Office at G and Girard



### Spiffing up Systems at Kulshan

Sarah Lane, our Office Manager, has been busy! As Kulshan Services grows with new clients, employees, and space, we are developing new systems for the office and for managing finances. We have streamlined and clarified office procedures and added new finance tools that are helping with day-to-day management. The excellent resources at the Small Business Development Center have enabled us to take a much deeper look into budgeting and planning for the company. These valuable tools are ensuring our business is as sustainable and efficient as possible.



### New Partner and Owner

Early this year, Terry Carten, who has worked for Kulshan Services for over two years, purchased an interest in our consulting company. "I am happy to be building the business with David and Allison Roberts." As a principal, Terry provides land use planning and regulatory analysis for clients throughout the Northwest. He is Kulshan Services' project lead for marine technical assistance programs and works to resolve issues related to regulatory, permitting, and government policy changes for dock owners, boatyards, maritime and other waterfront industries.

## Blog

### 5 Stormwater Tips & Tricks

Spring is a great time to organize friends and neighbors to get outside and tidy up stormwater facilities. Long days, few bugs, and not many leaves on brush and trees make this a snap.

**Tip #1: Sediment and Trash** – Check catch basins, ditches, culverts, ponds, swales, rain gardens, control structures, inlets and outlets for sediment and trash.

**Tip #2: Traction Sand** – Check for sand buildup in your storm drains and facility since they are often used for traction on icy roads.

**Tip #3: Erosion** – Inspect stormwater facilities for erosion and sediment build-up. Heavy rain and rapid flow of water can cause erosion along pond banks and berms, swales, and ditches. Plant grass or recommended aquatic species in the damaged areas to reduce erosion.

**Tip #4: Encroaching Trees** – Before the underbrush becomes established, cut small trees that are beginning to take over stormwater facilities. It is best to discuss this with neighbors to avoid misunderstandings.

**Tip #5: Trouble Shooting** – Note in your records any concerns regarding problems with drainage. This may indicate problems with either design or maintenance.

- 1) Did the pond overflow its banks or was water going over the emergency spillway?
- 2) Was there standing water on the road indicating a plugged catch basin?
- 3) Did any trees fall over and cause damage to the berms or dams?



## Testimonials: What our clients say about our work...

**Facilitation:** "David's role in 3FI has been so important in helping us work through some of the challenging issues we have faced and will continue to face."

*Kris Knight, The Nature Conservancy*

**Policy and Regulatory Analysis:** "Kulshan has worked with WA State Fish and Wildlife and DNR respectively for many years. They know the rules and represent groups like NMTA very well." *Peter Schrapen, NW Marine Trade Association President*

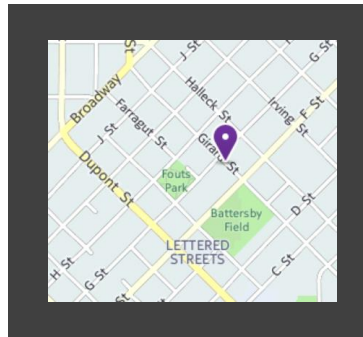
### Stop by and visit!

Soon, our outdoor patio will be open with a new fence and a color-filled, butterfly-friendly, edibles garden!

**1015 Girard Street,  
Bellingham, WA**

Check out our website  
([www.KulshanServices.com](http://www.KulshanServices.com))  
too and **LIKE** us on  
Facebook!

### Find us here...



Useful Links:

[Our team.](#)

[Recent News.](#)

[New Biological  
Services.](#)

---

*Copyright © 2016 Kulshan Services LLC, All rights reserved.*

You are receiving this email from Kulshan Services LLC because you are associates of David Roberts or clients of Kulshan [Environmental] Services. We will only send this newsletter quarterly so as to keep you informed about news, services and projects.

Our mailing address is:

Kulshan Services LLC

1015 Girard Street

Bellingham, WA 98225

[Add us to your address book](#)